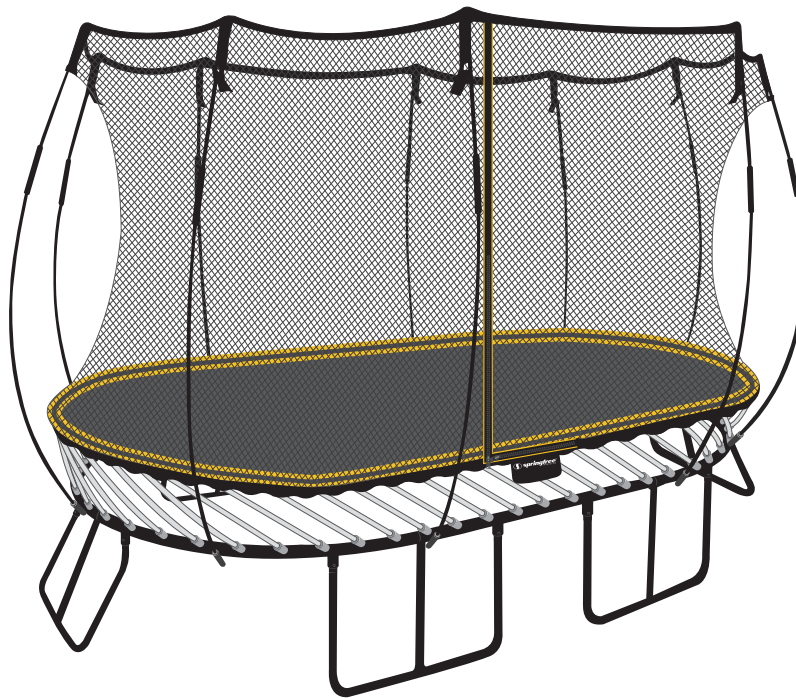


**092**

LARGE OVAL

**springfree**<sup>®</sup>  
TRAMPOLINE

## Trampoline & Enclosure Assembly Instructions



---

MAT DIAMETER	MINIMUM NET HEIGHT FROM MAT	MAT HEIGHT FROM GROUND	MAXIMUM USER WEIGHT
7.8 ft x 13.3 ft (2.4 m x 4 m)	6 ft (1.8 m)	3 ft (0.9 m)	220 lbs (100 kg)

---

The information in this document is subject to change without notice.  
© Copyright Springfree Trampoline Inc. 2005, 2014. All rights reserved.

718405



**WARNING:** Read the warnings on this page and those contained in the User Guide before you assemble and use the trampoline and enclosure.



Do not attempt or allow somersaults. Landing on the head or neck can cause serious injury, paralysis or death even when landing on the middle of the mat.



Do not allow more than one person at the same time on the trampoline or enclosure. Use by more than one person can result in serious injury.



Treat any loaded rod with caution until you are sure it is properly installed or uninstalled. Keep your face well away from any loaded rod.



Never attempt to remove a black net rod from its net pocket or disengage (unlock) the rod sleeve while the black net rod is under tension.



Do not hold onto, or place fingers between the rods while someone is jumping on the trampoline.



Your Springfree trampoline has been designed for residential backyard use by both children and adults. The Maximum User Weight for this trampoline is located on the front panel of this manual. Jumpers at or near the Maximum User Weight should take extra precaution in their manoeuvres to ensure they do not initiate contact with the ground while jumping as this can cause serious injury.



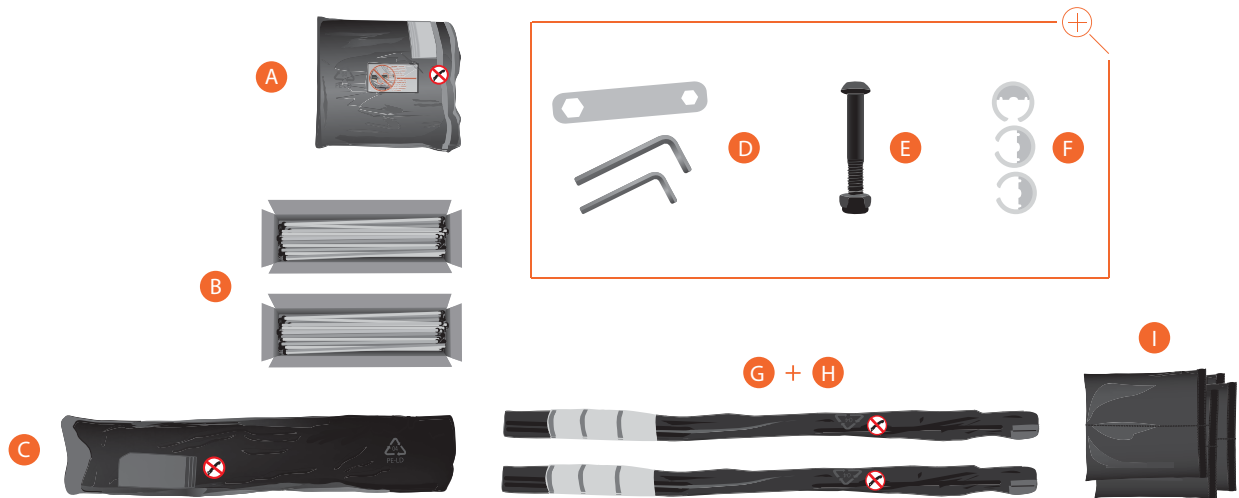
Installing the trampoline can be challenging if you don't carefully follow these instructions. To make it easier, we have helpful demonstration videos that will guide you through each step. Visit <http://springfr.ee/install-ov> or scan the code in Step 1 to get started.



Assembly Precautions: Read the following steps before beginning the assembly process.

---

1. Keep small children at least 25 ft (7.5 m) away while assembling the trampoline; they could be injured by improperly assembled rods releasing and ejecting from the frame.
2. Do not attempt to use the trampoline until it is completely assembled.
3. Installation typically takes two hours to complete. Two people are recommended for assembly.
4. Gloves are recommended during the assembly process, especially Step 6, 7 and 8.
5. Be aware that when loaded, the rods can spring back and may cause injury.
6. Treat any loaded rod with caution until you are sure it is properly installed. In particular, keep your face well clear of the rods during assembly or disassembly. An improperly installed rod could release and cause facial injury or blindness.
7. The sleeves on the rods are intended to provide protection from fibers or splinters. Do not remove the sleeve. If they are damaged, replace them.
8. A minimum of 26 ft (8 m) overhead clearance when measured from the ground is required to prevent users inadvertently contacting overhead hazards such as electric wires, tree limbs and clotheslines.
9. Maintain a minimum clearance of 5 ft (1.5 m) on all sides of the trampoline. This area should not include concrete, bitumen, brick or other hard surfaces as these can cause serious injuries if users fall off the trampoline.



Part	Quantity	Part	Quantity
A	1	F	3
B	58	G	2
C	1	H	10
D	3	I	4
E	1		

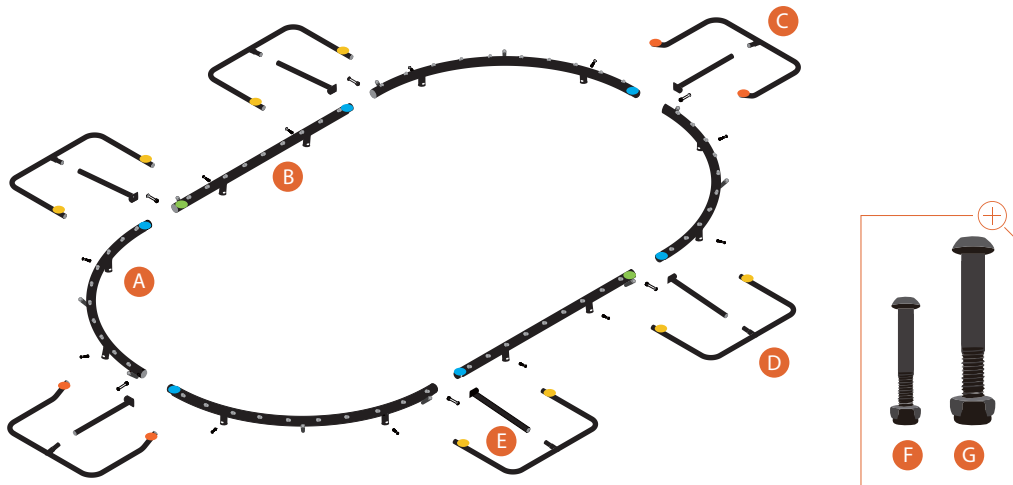


**TIP** - Assemble the trampoline on a flat surface.

- Layout all parts listed as shown.



SCAN HERE or visit <http://springfr.ee/install-ov> for a helpful installation overview video.

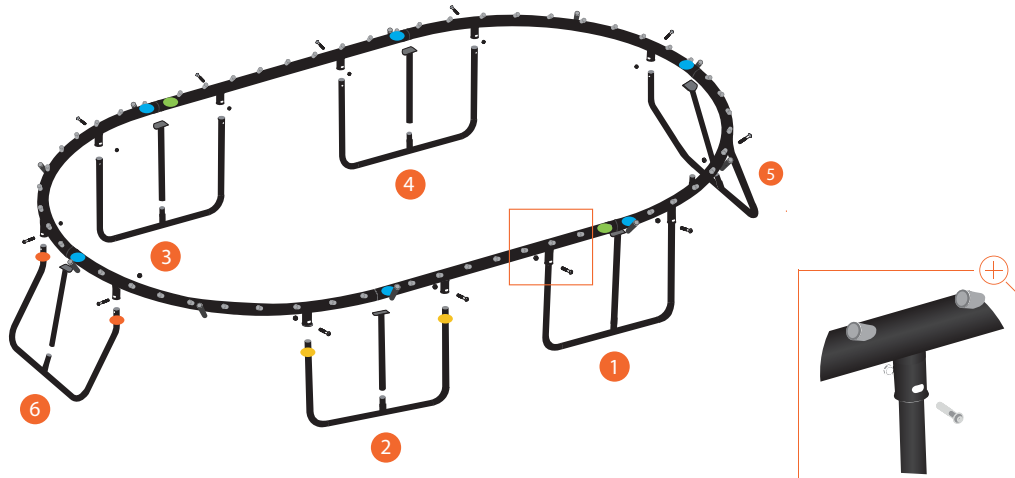


Part	Quantity	Part	Quantity		
A	Curved Frame Sections	4	E	Center Posts	6
B	Straight Frame Sections	2	F	Small Bolts & Nuts	12
C	Orange Bent Legs	2	G	Large Bolts & Nuts	6
D	Yellow Legs	4	H	C-clips (Attached to Frame)	10

- Lay out the remaining parts as shown. The coloured stickers all face upwards.
- If you are missing any parts please contact Springfree® Trampoline directly.



SCAN HERE or visit <http://springfr.ee/step-2> for a helpful installation video for Step 2.

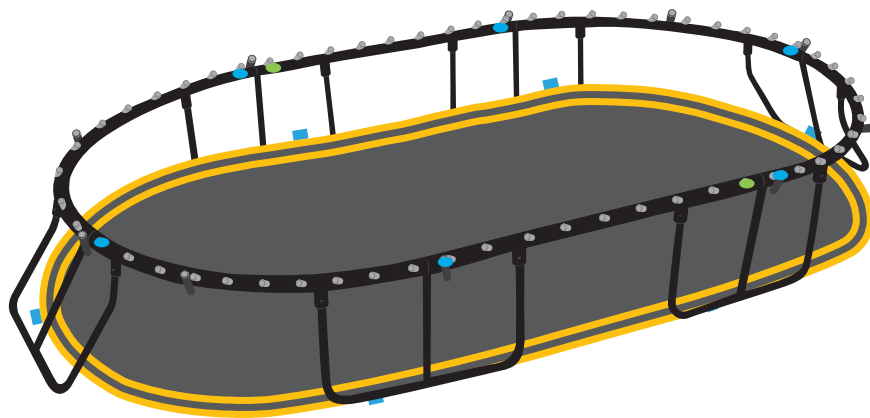


**WARNING** - Use the tools provided to fasten the nuts. Do not over tighten the nuts. Do not use power driver, torque wrench, or drill.



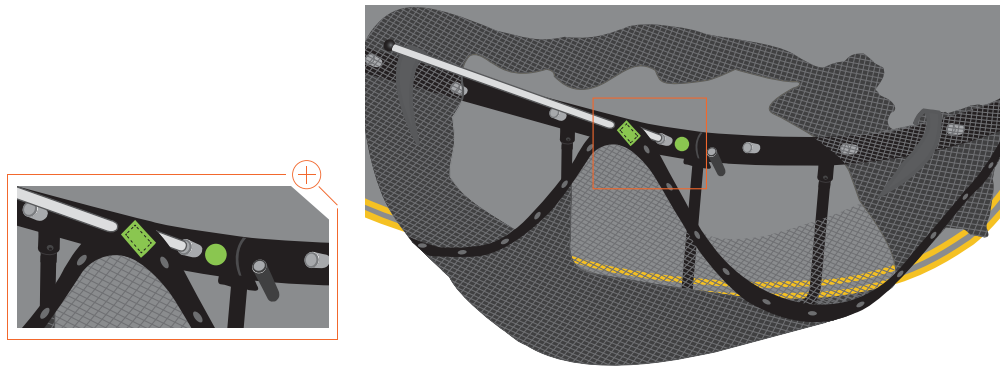
**TIP** - Fastening the final two frame sections often requires additional effort. Two people may be required for assembly.

- Connect and fasten one frame section at a time together with the large nuts and bolts.
- Attach a center post to the middle of each leg section.
- Then, in the order shown in the illustration, lift the frame and evenly put the legs into the leg hole on the frame. We recommend that two people work together to complete this step. One person to hold the frame up and horizontal, and the other person to put the legs into the leg hole.
- Fasten each leg to the frame before going to the next leg.

**STOP**

**NOTE** - Before proceeding, double check that all of the bolts and nuts are tightened. Use the tools provided to fasten the nuts. Do not over tighten the nuts. Do not use power driver, torque wrench, or drill.

- Lay out the mat with the yellow stripes facing upwards inside the trampoline frame.
- The blue tags on the mat should approximately align with the blue stickers on the frame.



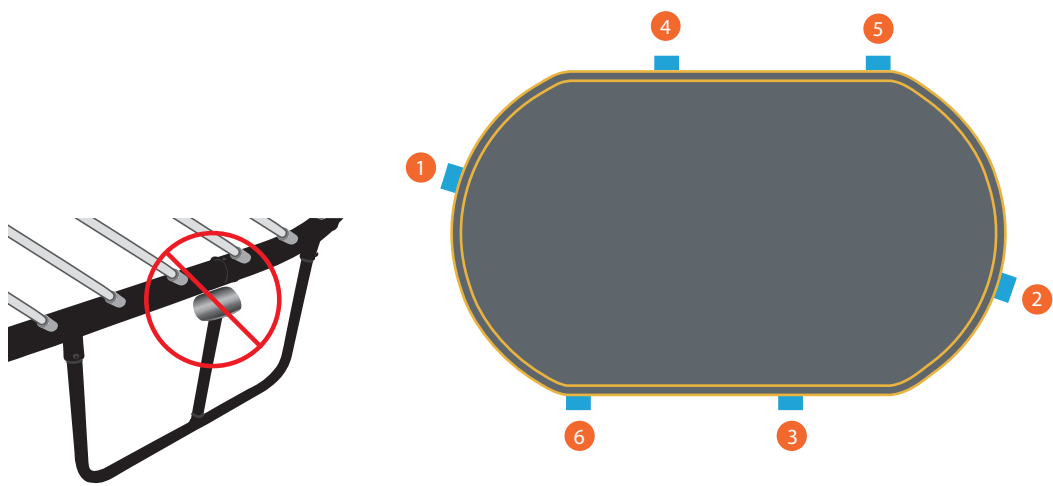
**NOTE** - As you install the white mat rods into the mat rod sockets the net will become tight against the frame. Handle the net with care and be sure that it does not get caught or it may tear.

- Locate the green ■ tag on the bottom edge of the net and match it with one of the green ● stickers on the frame.
- Holding the net so that the green ■ tag is facing you, gently place the rest of the net inside the frame as shown. DO NOT let go of the green ■ tag.
- Put a white mat rod through the hole to the immediate left of the green ■ tag in the net and then into the mat rod socket next to the green ● sticker.
- Then, working carefully around the frame, insert the remaining white mat rods through the net holes and into the corresponding mat rod socket. When finished, the net should be stretched tightly around the OUTSIDE of the frame.
- Be sure that the white mat rods are seated down to the bottom of each mat rod socket.



**SCAN HERE** or visit <http://springfr.ee/step-5> for a helpful installation video for Step 5.



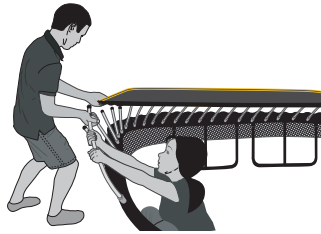


**WARNING** - Treat any loaded rod with caution until you are sure it is properly installed or uninstalled. Keep your face well away from any loaded rod.  
**WARNING** - Both people must maintain a steady grip on the rod until it is securely installed in the mat rod holder.



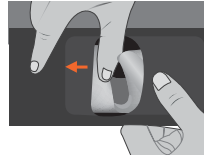
**NOTE** - Before you install the first white mat rod into a mat rod holder, read the instructions in Step 6b and 6c.  
**NOTE** - Two people are required for assembly.  
**NOTE** - Following the sequence shown spreads the tension evenly across the mat. If you do not follow this sequence, it will be very difficult to attach the mat.

- Check that the center posts of the leg sections are correctly seated under the trampoline frame. If they are not, adjust them now.
- Attach one white mat rod at each of the locations shown - where the blue ■ tags on the mat match with the blue ● stickers on the frame.

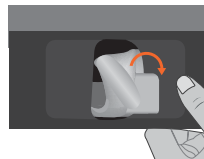


1 Have one person position themselves inside the frame of the trampoline while the other stands outside as shown.

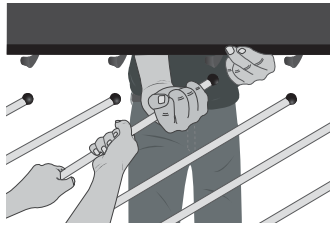
**Incorrect Position**



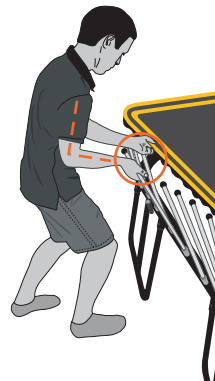
**Correct Position**



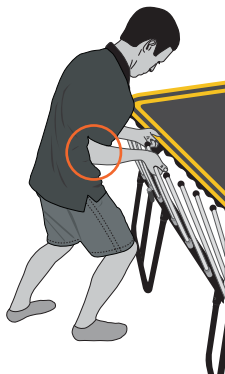
2 **Inside Person:** Ensure that the mat rod holder is correctly positioned with the small tag positioned outside the mat rod holder pocket.



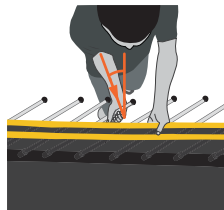
3 **Inside Person:** Take hold of the rod with both hands and maintain a steady grip until it is securely installed in the mat rod holder.



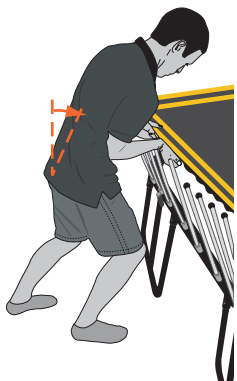
4 **Outside Person:** Hold the white mat rod with your palm facing up. Keep the mat edge horizontal with the other hand.



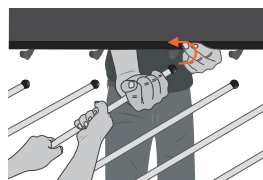
5 **Outside Person:** Stand with one leg forward and knees bent. Bend your arm at a right angle, push your elbow into your hip, and hold the white mat rod.



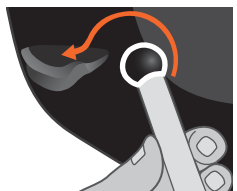
6 **Outside Person:** Pushing across your body in the direction shown will make it easier to get the mat rods in or out of the mat rod holders.



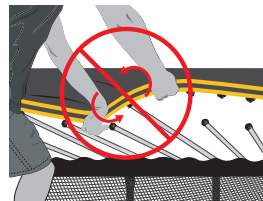
**7 Outside Person:** Rocking from your heels to the balls of your feet, use your body weight to push the white mat rod towards the center of the mat.



**8 Inside Person:** As the outside person pushes, carefully pull the rod in and up in the direction of the mat rod holder.



**9** Guide the white mat rod up and over the back edge of the mat rod holder and into position. Check that the rod is fully seated in the mat rod holder before continuing.



**10 Outside Person:** Do not twist or rotate the mat to remove a rod from a mat rod holder. This could cause serious injury or damage the trampoline.

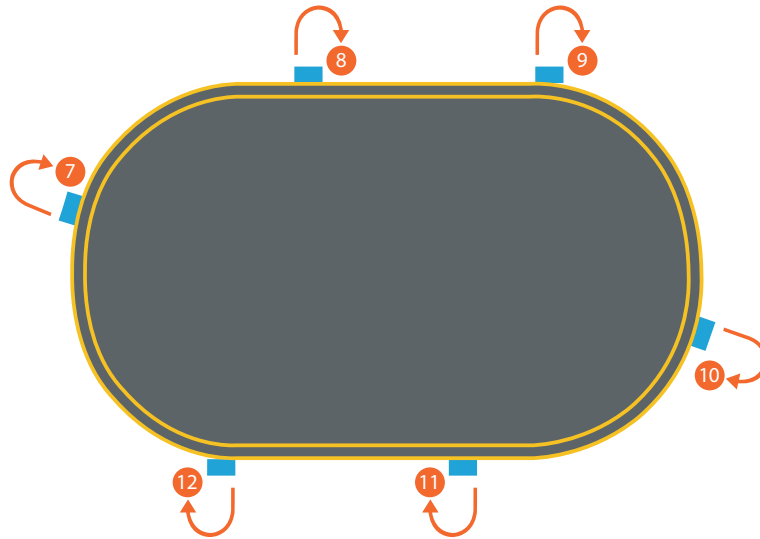


**TIP** - Keep the mat level when you install or uninstall the white mat rods.



**SCAN HERE** or visit <http://springfr.ee/step-6> for a helpful installation video for Step 6.

- If you need to take a white mat rod out of the mat see the Disassembly Instructions.



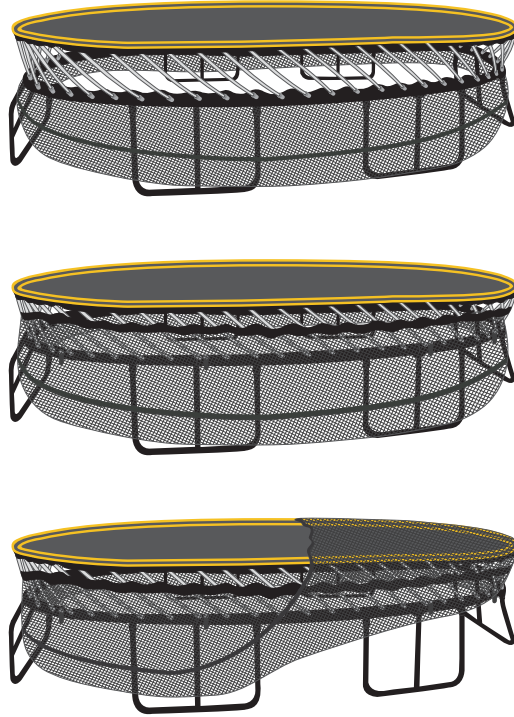
**WARNING** - Treat any loaded rod with caution until you are sure it is properly installed or uninstalled. Keep your face well away from any loaded rod.



**NOTE** - Follow the mat rod installation sequence. Do not install multiple mat rods in one location. If you do not follow this sequence, it will be very difficult to attach the mat.

**NOTE** - Each time you circle the trampoline, check that the center posts of the leg sections are correctly seated under the trampoline frame. If they are not, adjust them before installing any more rods. You may need to uninstall rods to release the tension.

- Go back to the very first rod you attached to the mat in Step 6a. Now, moving clockwise, attach ONE white mat rod next to the initially installed rod.
- Moving clockwise around the trampoline, attach ONE additional rod next to each of the already installed rods as shown above.
- Continue circling the trampoline several more times following this sequence, installing only ONE rod per grouping, until all the white mat rods are attached to the mat

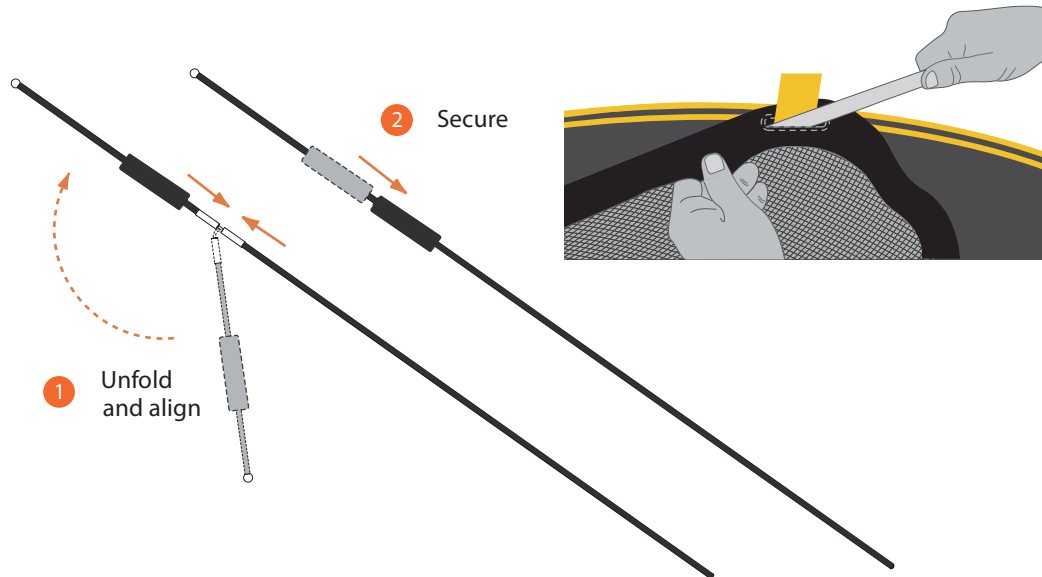


**WARNING** - Do not use the trampoline until it is completely assembled. Failure to follow these instructions may cause rods to break or eject from the trampoline frame.



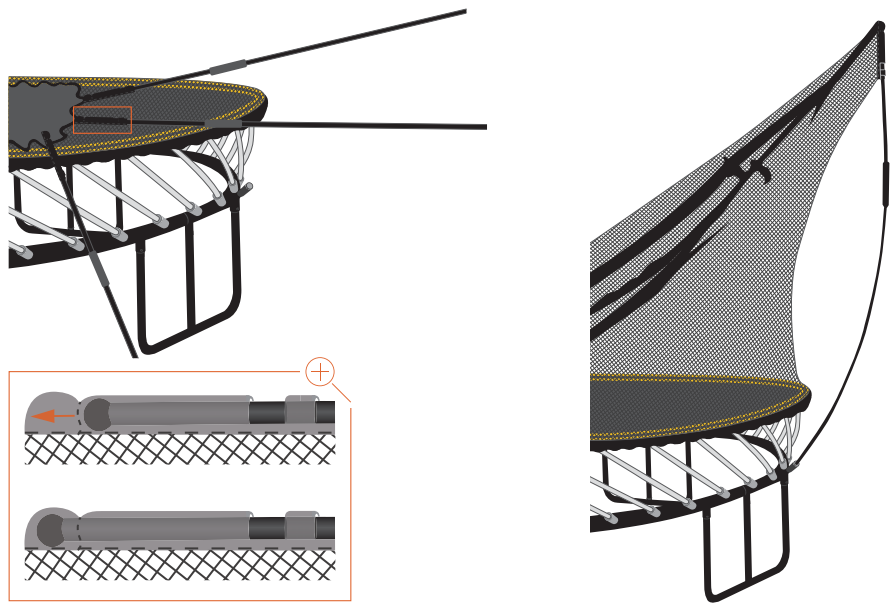
**NOTE** - Check that the net is not caught on the trampoline frame or the bolts – if the net catches, it may tear.

- Moving clockwise around the frame, carefully slide the net up to the top of the white mat rods.
- Starting at a corner, carefully pull the net up over the edge of the mat. It is normal for the net to be tight
- Working around the frame, lift the rest of the net into the center of the mat. Ensure that the bottom band of the net is pulled all the way to the top of the white mat rods.



**WARNING** - Treat any loaded rod with caution until you are sure it is properly installed or uninstalled. Keep your face well away from any loaded rod.

- Locate the yellow  tag along the top edge of the net.
- Slide a horizontal net rod into the pocket at the yellow  tag. Tuck the end of the rod into the pocket. Once it is fully inserted, check that the rod is centered within the pocket.
- Repeat on the other sides of the trampoline.
- Assemble the black net rods as shown.

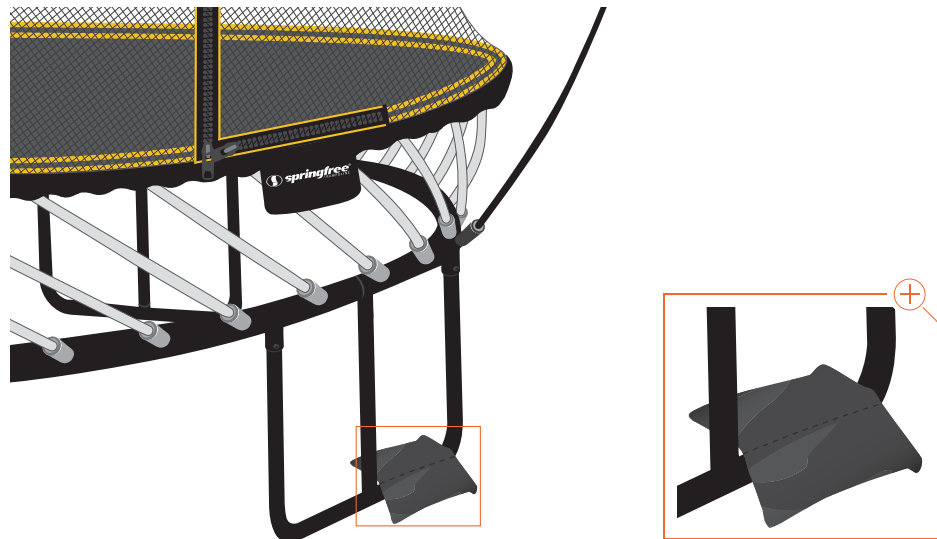


**WARNING** - Never attempt to remove a black net rod from its net rod pocket or disengage (unlock) the rod sleeve while the black net rod is under tension.

- Insert ALL of the black net rods into the net rod pockets at the top edge of the net. Push the rod up into the pocket and past the catch. You will feel some resistance as the ball is pushed through.
- Insert the bottom end of the black net rod into the net rod socket on the trampoline frame. You will hear a click when the black net rod is fully seated



SCAN HERE or visit <http://springfr.ee/step-10> for a helpful installation video for Step 10.



**WARNING** - Make sure you read all warnings and precautions found in the User Guide before using the trampoline

**WARNING** - If you anticipate severe weather, consider lowering the enclosure, moving the trampoline to a sheltered location or disassembling the trampoline completely.

- For increased stability, your trampoline comes with sandbags.
- Fill these sandbags to approximately 6 inches (150 mm) below the top with wet or dry coarse sand.
- Fold over the top of the bag twice so the Velcro® strips meet. Velcro is a registered trademark of Velcro Industries B.V.
- Place the sandbags over the trampoline legs as required so that the sandbag cannot slip off. We recommend that the stitched seam in the center should lay over the leg tube.
- If your trampoline is installed in an area susceptible to high winds or if you are looking for increased stability for your trampoline, we recommend the Springfree Ground Anchor, which has been designed specifically for the Springfree Trampoline. Ground Anchors can be purchased online at [www.springfree.com](http://www.springfree.com).

Congratulations! You have successfully installed your Springfree Trampoline! Happy bouncing!